



STAND 69



Our Gallery is pleased to announce its participation in BRAFA
from January 26 to February 2 at Brussels Expo.

For this event we know from the last 30 years, we have selected masterpieces among our latest acquisitions, including several iconic models from the Sculpture History of 19th and 20th centuries. These pieces will be shown on our stand with contemporary artworks.

Modernity will be embodied with one sculpture by F. X. Lalanne (1927-2008), a *Chat* in Black marble from the original edition. The unmissable François Pompon (1855-1933) will be represented with a fine selection including a rare example of the *Pigeon Nicolas*, an important model of the bestiary because this pigeon was Pompon's pet. Among other rarities for the animaliers of the 30s, a varnished terracotta *Cheval Marin* by Jeanne Piffard (1892-1971), a unique piece; a pair of very large Gazelle by Guido Righetti (1875-1958) (c. H. 85 cm), cast by Battaglia circa 1936.

Human figures will be also there with wonderful models by Rodin (1840-1917), with an elegant group of *Sirènes* or *Néréides*, cast in 1945.

We are delighted to show the unique cast of the *Torse du Diadumène* by Raymond Delamarre (1890-1986), a large format cast by Bisceglia especially for the industrial patron from Saint Etienne in 1937 (c. H. 120cm).

Except this eclectic selection, we also have the opportunity to exhibit for our Belgian collectors several contemporary design pieces by par Hubert le Gall (born in 1961), worldwide known interior and exhibition designer, who creates a cross influential and playful Oeuvre. Among these models, the last example of the impressive *Éternel Printemps* cabinet, a masterpiece of engineering and Japanese aesthetic; then a *Branche-neige bench*, joyful synthesis of Graphism with the Lesage embroidery; Sculpture with the branch and Function with the moving stools.

For more details : Charline Bessiere / cb@universdubronze.com

Direct access to our website: <https://www.universdubronze.com/>

Access to Hubert le Gall's Design presentation :
https://www.universdubronze.com/media/DuBronzeMedia/publications/publicationsDocuments/def-plaquette-le-gall-brafa_17122024T174410.938_638700542509464568.pdf



Labels of masterpieces

Hubert LE GALL Born in 1961**CABINET L'ETERNEL PRINTEMPS**

Bronze, polished and black

H : 161 cm, L : 100 cm, D : 54 cm

Original artist limited edition, stamped
«Legall», this one numbered « I/IV ».**Circa 2024****Hubert LE GALL Born in 1961****BANC BRANCHE NEIGE****Vignes**

Bronze, Lesage Embroidery

H : 47 cm, L : 167 cm, D : 44 cm

From an edition at 8 examples.

Circa 2024**François-Xavier LALANNE (1927-2008)****CHAT (1990)**Denée black marble, grey veins and Sienna yellow marble
for the eyes.

H : 14,5 cm, L : 30,9 cm, D : 14,7 cm

Artcurial edition (monogram and seal), numbered "EA 5/8"
for Artist example 5/8. Provenance : purchased directly from
the artist by the former director of the hôtel du Bas-Bréau at
Barbizon, Monsieur M in 1999.**Carved in 1999**



Auguste RODIN (1840-1917)

LES SIRENES (original size, before 1887)

or "Les Néréides", "Les océanides", "Voix de Victor Hugo"

Bronze, richly shaded green red brown patina

H : 21,8 cm, L : 22,5 cm, D : 13,4 cm

Authentic example signed "Rodin", old edition, cast by "Alexis Rudier Fondateur Paris" (mark) with the inside relief seal "A.Rodin", sixteen examples identified in 2007 including 3 lifetime casts and 5 casts by Alexis Rudier (Comité Rodin letter advice 2007-V1716B).

Cast in 1945



Raymond DELAMARRE (1890-1986)

TORSE DU DIADUMENE (1936)

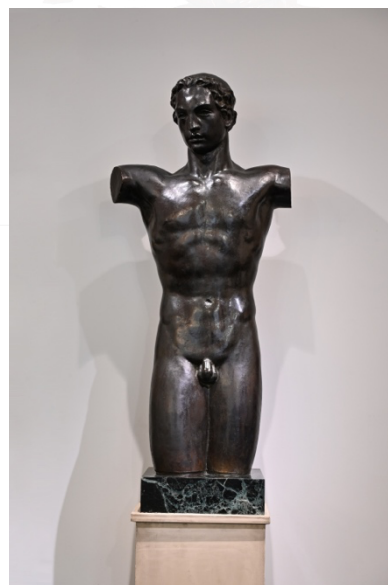
Plaster exhibited at the Salon des Tuileries (cat. n°439).

Bronze, richly dark black brown patina

H : 119 cm, L : 51,5 cm, D : 27 cm

Bronze cast for the patron M. Giron (commissioned in December 1937), signed "Raymond Delamarre", dated "1937", cast by "Bisceglia Cire Perdue Malakoff" (seal), only one bronze example currently identified.

Cast circa 1937-1938



Guido RIGHETTI (1875-1958)

GRANDE GAZELLE DE "GRANT"

Bronze, richly dark black brown patina

H : 85,2 cm, L : 61 cm, D : 24,3 cm

Lifetime cast signed "G.Righetti", dated "1936", cast by "Fonderia Artistica Battaglia" (seal) – very rare in this size.

Circa 1936



Guido RIGHETTI (1875-1958)

GAZELLE EGYPTIENNE

Bronze, richly dark black brown patina

H : 82,5 cm, L : 63 cm, D : 23,8 cm

Lifetime cast signed "G.Righetti" – very rare in this size.

Circa 1936



Jeanne PIFFARD (1892-1971)

CHEVAL MARIN

Salon National Indépendant (scission SNBA) in 1938;

Salon des Tuileries (1941)

Varnished terracotta, cream, green, shaded brown polychromy.

H : 48,9 cm, L : 75,2 cm, D : 25,9 cm

Signed "J. Piffard" – direct modelling, probably unique (restoration and cleaning report on request), French customs seal under for a possible foreign exhibition

Circa 1938



François POMPON (1855-1933)

PIGEON NICOLAS (first state, without base). (1926-1927)

Salon d'Automne (1926)

Bronze, richly dark red brown patina.

H : 28,6 cm, L : 27,5 cm, D : 15,6 cm

Artist example signed "Pompon", cast by "C.Valsuani cire perdue Paris" (seal)

Circa 1927-1930

